

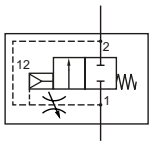
Soft start valve DAY

Technical details

Temperature range	0°C ... +50°C
Input range	2.5 ... 16 bar (size Y0 max. 12 bar)
Mounting	arbitrary
Medium	compressed air according to ISO 8573-1:2010, neutral gases
Materials	Body: Grivory (PA66), seals: NBR, inner parts: plastic, stainless steel and brass



Poppet valve, operated by secondary pressure
The filling time is adjustable.



Order code

		DAY-**-00-0-0001
Series		←
Connection / Size		←
04	G1/4 / Y0	
14	G1/4 / Y1	
37	G3/8 / Y1	
38	G3/8 / Y2	
12	G1/2 / Y2	
34	G3/4 / Y3	
10	G1 / Y3	

Technical data

Model-no.:	DAY-04-...	DAY-14-...	DAY-37-...	DAY-38-...	DAY-12-...	DAY-34-...	DAY-10-...
Connection	G1/4	G1/4	G3/8	G3/8	G1/2	G3/4	G1
Size	Y0	Y1	Y1	Y2	Y2	Y3	Y3
Flow (NI/min)	2000	2000	2000	4500	4500	10000	10000
Weight (kg)	0.14	0.24	0.22	0.54	0.52	0.79	0.63