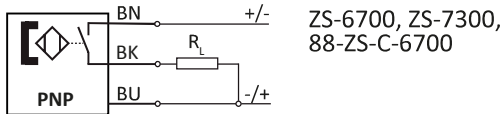
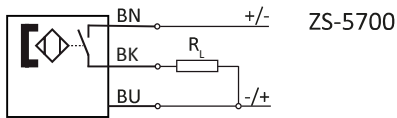
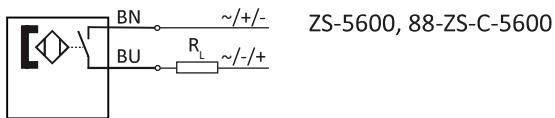


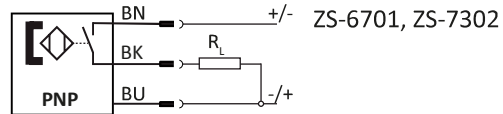
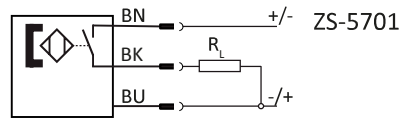
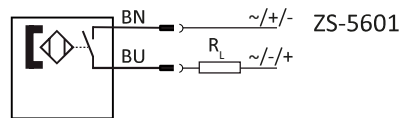
Series ZS and 88-ZS-C

Proximity sensors

Proximity sensors with cable



Proximity sensors with plug



Technical data

Model-no.:	ZS-5600	ZS-5601	ZS-5700	ZS-5701
Design	2-pole Reed sensor	2-pole Reed sensor	3-pole Reed sensor	3-pole Reed sensor
Contact function	NO	NO	NO	NO
Rated operational voltage	5 ... 240 V AC / DC	5 ... 60 V AC / DC	5 ... 30 V DC	5 ... 30 V DC
Rated operational current I_E	3 ... 100 mA	3 ... 100 mA	\leq 500 mA	\leq 500 mA
Max. voltage drop at I_E	\leq 2.5	\leq 2.5	\leq 0.1	\leq 0.1
Breaking capacity	10 W	10 W	10 W	10 W
Cable length	3 m	0.3 m with M8 connection	5 m	0.3 m with M8 connection
Temperature range	-10 ... +70°C	-10 ... +70°C	-10 ... +70°C	-10 ... +70°C
Protection	IP 67	IP 67	IP 67	IP 67
Switching status indication	LED red	LED red	LED yellow	LED yellow

Model-no.:	ZS-6700	ZS-6701	88-ZS-C-5600	88-ZS-C-6700
Mounting	T-Nut	T-Nut	C-Nut	C-Nut
Design	3-pole inductive	3-pole inductive	2-pole Reed sensor	3-pole inductive
Contact function	NO	NO	NO	NO
Output	PNP	PNP	PNP	PNP
Rated operational voltage	5 ... 30 V DC	5 ... 30 V DC	10 ... 28 V DC	5 ... 30 V DC
Rated operational current I_E	\leq 200 mA	\leq 200 mA	\leq 50 mA	\leq 200 mA
Max. voltage drop at I_E	\leq 1.0	\leq 1.0	\leq 2.5	\leq 1.0
Breaking capacity	6 W	6 W	1, W	6 W
Cable length	3 m	0.3 m with M8 connection	3 m	3 m
Temperature range	-10 ... +70°C	-10 ... +70°C	-20 ... +60°C	-10 ... +70°C
Protection	IP 67	IP 67	IP 67	IP 67
Switching status indication	LED green	LED green	LED	LED

Series ZS and 88-ZS-C

Proximity sensors

Cable with bushing for proximity sensors

Model-no.:	KA-30	KA-50	KA-51	KA-100	KA-101
Connection	M8, snap-in	M8, snap-in	M8, snap-in	M8, snap-in	M8, snap-in
Version	straight	straight	elbow 90°	straight	elbow 90°
Cable length	3 m	5 m	5 m	10 m	10 m

Mounting

The sensors are mounted at the groove of the cylinder profile. It is fixed by turning the fixing screw at the sensor clockwise.