

Series VZ

Technical details

Temperature range	-10°C ... +70°C
Medium	Filtered, oil-free and dried compressed air according to ISO 8573-1:2010, Class 7:2:4, instrument air, free of aggressive additives. Alternatively the pressure dew point must be at least 10°C below lowest occurring ambient temperature.
Materials	Body: Al (anodized), seals: NBR and POM, inner parts: Al, stainless steel and brass



This valve may be used either normally open or normally closed.

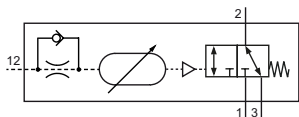
Normally closed: pressure inlet port 1 (P).

Normally open: pressure inlet port 3 (R).

A signal arriving at 12 (Z) switches the flow of the valve from 1 (P) to 2 (A) and closes port 3 (R) after the set time has expired.

Instead of supplying main pressure to either port 1 or 3, the branched signal line can be connected to 1 or 3. The signal line to port 1 or 3 must not be longer than the signal line to port 12.

3/2-way valves



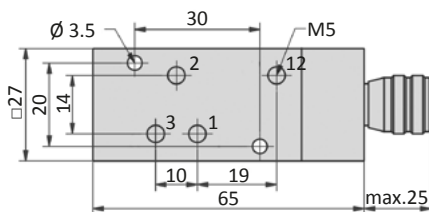
VZ
3/2-way, single pilot,
mechanical spring return,
adjustable time delay

Technical data

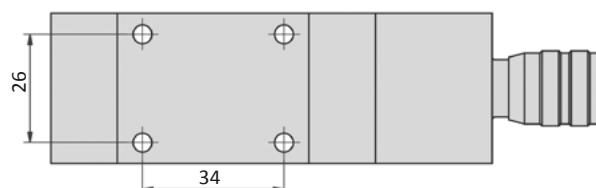
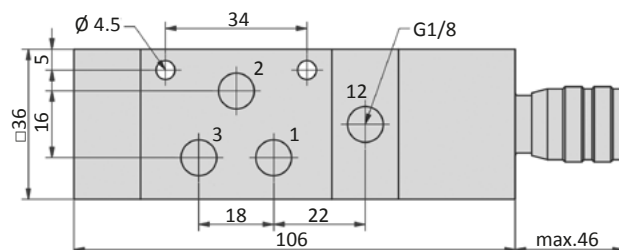
Model-no.:	VZ-25-310	VZ-18-310	VZ-18-310-20
Connection	M5	G1/8	G1/8
Nominal size (mm)	3.2	6	6
Operating pressure (bar)	3 ... 10	3 ... 10	3 ... 10
Pilot pressure (bar)	3 ... 10	3 ... 10	3 ... 10
Time range (s)	0.25 ... 5	0.5 ... 10	1 ... 20
Flow rate (Nl/min)	160	600	600
Weight (kg)	0.135	0.360	0.360

Dimensions

VZ-25-310



VZ-18-310, VZ-18-310-20



- 1 = pressure inlet
- 2 = outlet
- 3 = exhaust
- 12 = signal port