

Series P-07

Technical details

Connection	G1/4
Nominal size	9 mm
Temperature range	-10°C ... +70°C
Medium	Filtered, oil-free and dried compressed air according to ISO 8573-1:2010, Class 7:2:4, instrument air, free of aggressive additives. Alternatively the pressure dew point must be at least 10°C below lowest occurring ambient temperature.
Materials	Body: Al (anodized), seals: NBR and POM, inner parts: Al, brass, stainless steel
	Valves in accordance with 2014/34/EU (ATEX) available. (Chapter 13)



Pneumatically operated spool valve. The valve switches upon pressurization of the pilot port.

3/2-way valves

	P-07-311 3/2-way, single pilot, mechanical spring return
	P-07-320 3/2-way, double pilot
	P-07-322 3/2-way, double pilot, one side dominant

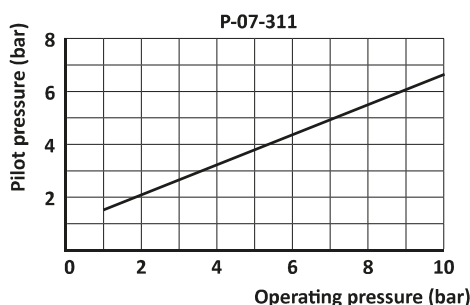
5/2- and 5/3-way valves

	P-07-511 5/2-way, single pilot, mechanical spring return
	P-07-520 5/2-way, double pilot
	P-07-522 5/2-way, double pilot, one side dominant
	P-07-530 5/3-way, center position closed
	P-07-533 5/3-way, center position exhausted
	P-07-534 5/3-way, center position pressurized

Technical data

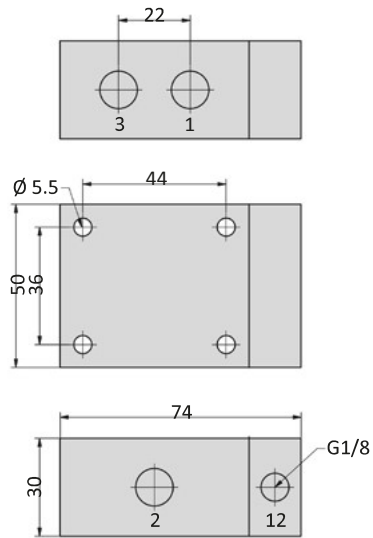
Model-no.:	P-07-311	P-07-320	P-07-322
Operating pressure (bar)	1 ... 10	0 ... 10	0 ... 10
Pilot pressure (bar)	see diagram	1.5 ... 10	1.5 ... 10
Flow rate (NI/min)	1580	1580	1580
Weight (kg)	0.281	0.350	0.350

Model-no.:	P-07-511	P-07-520	P-07-522	P-07-530	P-07-533	P-07-534
Operating pressure (bar)	0 ... 10	0 ... 10	0 ... 10	0 ... 8	0 ... 8	0 ... 8
Pilot pressure (bar)	3 ... 10	1.5 ... 10	1.5 ... 10	3 ... 8	3 ... 8	3 ... 8
Flow rate (NI/min)	1580	1580	1580	1300	1300	1300
Weight (kg)	0.360	0.420	0.420	0.420	0.420	0.420

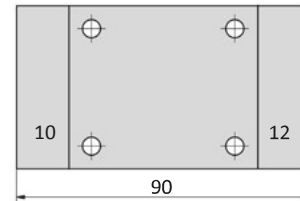


Dimensions

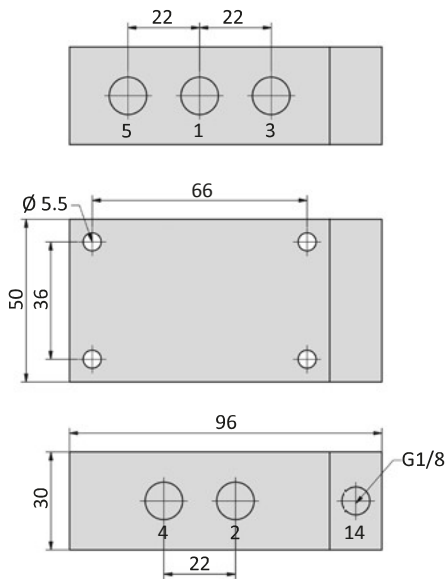
P-07-311



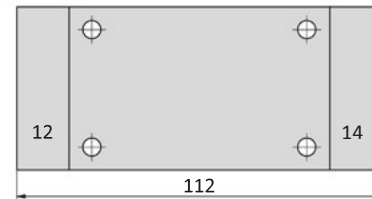
P-07-32x



P-07-511



P-07-52x, P-07-53x



- 1 = pressure inlet
 - 2,4 = outlets
 - 3,5 = exhausts
 - 10,12,14 = pilot ports
- Pilot ports can be repositioned by 180°.

Accessories

