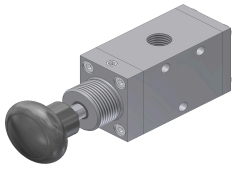




## STAINLESS STEEL VALVES

- > MANUALLY OPERATED
- > PNEUMATICALLY OPERATED
- > SOLENOID OPERATED
- > NAMUR MOUNT
- > ATEX
- > EXPLOSION PROOF

# STAINLESS STEEL



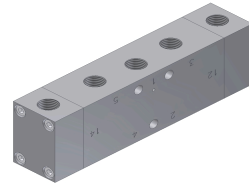
## TKX SERIES PUSH/PULL VALVE

G1/4 or 1/4" NPT  
 3/2 Way  
 Detented or Spring Return  
 1.5 Cv  
 Pressure Range 0... 10 bar (0 to 145 PSI)  
 Temperature Range -30 C to +80 C  
 316 Stainless Steel  
 Seals PU/NBR



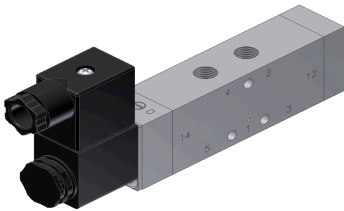
## HFX/HRX SERIES HAND LEVER VALVE

G1/4 OR 1/4" NPT  
 3/2 5/2 or 5/3 Way  
 Detented or Spring Return  
 1.3 Cv to 1.58 Cv  
 Pressure Range 0... 10 bar (0 to 145 PSI)  
 Temperature Range -30 C to +80 C  
 316 Stainless Steel  
 Seals PU/NBR



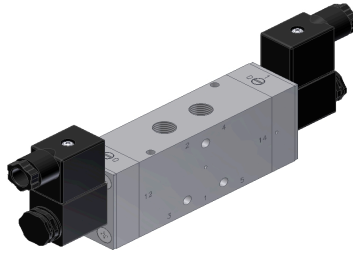
## PKX SERIES PNEUMATIC VALVE

G1/8, G1/4, 1/8 NPT, 1/4" NPT  
 5/2 Way (single or double pilot)  
 1.08 Cv to 1.980 Cv  
 Pressure Range 3... 10 bar (45 to 145 PSI)  
 Temperature Range -30 C to +80 C  
 316 Stainless Steel  
 Seals PU/NBR



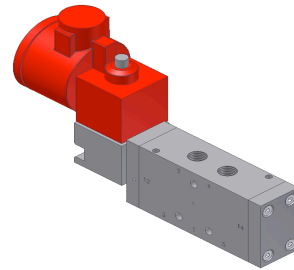
## KMX SERIES SOLENOID VALVE 1/8"

G1/8 or 1/8" NPT  
 5/2 and 5/3 way (single or double solenoid)  
 1.08 Cv to 1.11 Cv  
 Pressure Range 3... 10 bar (45 to 145 PSI)  
 Temperature Range -30 C to +80 C  
 316 Stainless Steel  
 Seals PU/NBR



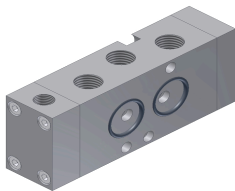
## KMX SERIES SOLENOID VALVE 1/4"

G1/4 or 1/4" NPT  
 5/2 and 5/3 way (single or double solenoid)  
 1.77 Cv to 1.98 Cv  
 Pressure Range 3... 10 bar (45 to 145 PSI)  
 Temperature Range -30 C to +80 C  
 316 Stainless Steel  
 Seals PU/NBR



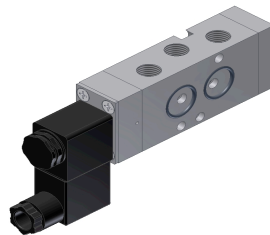
## KMX SERIES SOLENOID VALVE EXPLOSION PROOF/INTRINSICALLY SAFE

G1/8, G1/4, 1/8" NPT, 1/4" NPT  
 5/2 Way (single or double solenoid)  
 1.08 Cv to 1.98 Cv  
 Pressure Range 3... 10 bar (45 to 145 PSI)  
 Temperature Range -30 C to +80 C  
 316 Stainless Steel  
 Seals PU/NBR



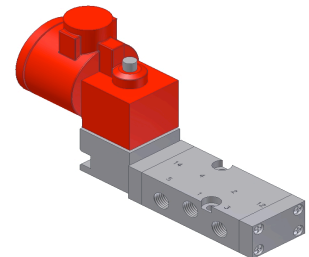
## PNX SERIES PNEUMATIC NAMUR VALVE

G1/4 or 1/4" NPT (pilot G1/8 or 1/8" NPT)  
 3/2, 5/2 Way (single or double pilot)  
 1.05 Cv to 1.28 Cv  
 Pressure Range 3... 10 bar (45 to 145 PSI)  
 Temperature Range -30 C to +80 C  
 316 Stainless Steel  
 Seals PU/NBR



## KNX SERIES SOLENOID NAMUR VALVE

G1/4 or 1/4" NPT  
 3/2 Way  
 5/2 Way (single or double solenoid)  
 1 Cv to 1.28 Cv  
 Pressure Range 3... 10 bar (45 to 145 PSI)  
 Temperature Range -30 C to +80 C  
 316 Stainless Steel



## KNX SERIES SOLENOID VALVE EXPLOSION PROOF/INTRINSICALLY SAFE

G1/4 or 1/4" NPT  
 5/2 Way (single or double solenoid)  
 1.08 Cv to 1.98 Cv  
 Pressure Range 3... 10 bar (45 to 145 PSI)  
 Temperature Range -30 C to +80 C  
 316 Stainless Steel  
 Seals PU/NBR

<b>PART NUMBER</b>	<b>DESCRIPTION</b>	<b>PORT SIZE</b>	<b>FLOW</b>
TKX-14-311	3/2 WAY PUSH/PULL VALVE SPRING RETURN	G1/4 1/4" NPT	1500 NI/min 1.5 Cv
TKX-14-320	3/2 WAY PUSH/PULL VALVE, DETENTED	G1/4 1/4" NPT	1500 NI/min 1.5 Cv
HFX-14-310	3/2 WAY HAND LEVER VALVE SPRING RETURN	G1/4 1/4" NPT	1580 NI/min 1.58 Cv
HFX-14-510	5/2 WAY HAND LEVER VALVE SPRING RETURN	G1/4 1/4" NPT	1580 NI/min 1.58 Cv
HFX-14-530	5/3 WAY HAND LEVER VALVE CENTER CLOSED	G1/4 1/4" NPT	1300 NI/min 1.3 Cv
HFX-14-533	5/3 WAY HAND LEVER VALVE CENTER PRESSURIZED	G1/4 1/4" NPT	1300 NI/min 1.3 Cv
HRX-14-320	3/2 WAY HAND LEVER VALVE 2 POSITION, DETENTED	G1/4 1/4" NPT	1580 NI/min 1.58 Cv
HRX-14-520	5/2 WAY HAND LEVER VALVE 2 POSITION, DETENTED	G1/4 1/4" NPT	1580 NI/min 1.58 Cv
HRX-14-530	5/3 WAY HAND LEVER VALVE CENTER CLOSED, 3 POSITION, DETENTED	G1/4 1/4" NPT	1300 NI/min 1.3 Cv
HFX-14-533	5/3 WAY HAND LEVER VALVE CENTER PRESSURIZED, 3 POSITION, DETENTED	G1/4 1/4" NPT	1300 NI/min 1.3 Cv
PKX-09-511	5/2 WAY PNEUMATIC VALVE	G1/8 1/8" NPT	1080 NI/min 1.08 Cv
PKX-09-520	5/2 WAY PNEUMATIC VALVE DOUBLE PILOT	G1/8 1/8" NPT	1110 NI/min 1.11 Cv
PKX-10-511	5/2 WAY PNEUMATIC VALVE	G1/4 1/4" NPT	1980 NI/min 1.98 Cv
PKX-10-520	5/2 WAY PNEUMATIC VALVE DOUBLE PILOT	G1/4 1/4" NPT	1920 NI/min 1.92 Cv
PKX-10-530	5/3 WAY PNEUMATIC VALVE DOUBLE PILOT, CENTER POSITION CLOSED	G1/4 1/4" NPT	1770 NI/min 1.77 Cv
KMX-09-511	5/2 WAY SOLENOID VALVE	G1/8 1/8" NPT	1080 NI/min 1.08 Cv
KMX-09-520	5/2 WAY DOUBLE SOLENOID VALVE	G1/8 1/8" NPT	1110 NI/min 1.11 Cv
KMX-10-511	5/2 WAY SOLENOID VALVE	G1/4 1/4" NPT	1980 NI/min 1.98 Cv
KMX-10-520	5/2 WAY DOUBLE SOLENOID VALVE	G1/4 1/4" NPT	1920 NI/min 1.92 Cv
KMX-10-530	5/3 WAY DOUBLE SOLENOID CENTER POSITION CLOSED	G1/4 1/4" NPT	1770 NI/min 1.77 Cv

<b>PART NUMBER</b>	<b>DESCRIPTION</b>	<b>PORT SIZE</b>	<b>FLOW</b>
PNX-05-311	3/2 WAY AIR PILOTED <b>NAMUR</b> VALVE	G1/4 1/4" NPT	1280 NI/min 1.28 Cv
PNX-05-511	5/2 WAY AIR PILOTED <b>NAMUR</b> VALVE	G1/4 1/4" NPT	1060 NI/min 1.06 Cv
PNX-05-520	5/2 WAY DOUBLE AIR PILOTED <b>NAMUR</b> VALVE	G1/4 1/4" NPT	1050 NI/min 1.05 Cv
KNX-05-311	3/2 WAY SOLENOID VALVE <b>NAMUR</b>	G1/4 1/4" NPT	1580 NI/min 1.58 Cv
KNX-05-511	5/2 WAY SOLENOID VALVE <b>NAMUR</b>	G1/4 1/4" NPT	1980 NI/min 1.98 Cv
KNX-05-520	5/2 WAY DOUBLE SOLENOID VALVE <b>NAMUR</b>	G1/4 1/4" NPT	1920 NI/min 1.92 Cv
KNX-05-311- RGS	3/2 WAY SOLENOID VALVE <b>NAMUR</b> EXPLOSION PROOF/INTRINSICALLY SAFE	G1/4 1/4" NPT	1580 NI/min 1.58 Cv
KNX-05-511- RGS	5/2 WAY SOLENOID VALVE <b>NAMUR</b> EXPLOSION PROOF/INTRINSICALLY SAFE	G1/4 1/4" NPT	1980 NI/min 1.98 Cv
KNX-05-520- RGS	5/2 WAY DOUBLE SOLENOID VALVE <b>NAMUR</b> EXPLOSION PROOF/INTRINSICALLY SAFE	G1/4 1/4" NPT	1920 NI/min 1.92 Cv
KMX-09-511- RGS	5/2 WAY SOLENOID VALVE EXPLOSION PROOF/INTRINSICALLY SAFE	G1/8 1/8" NPT	1080 NI/min 1.08 Cv
KMX-09-520- RGS	5/2 WAY DOUBLE SOLENOID VALVE EXPLOSION PROOF/INTRINSICALLY SAFE	G1/8 1/8" NPT	1110 NI/min 1.11 Cv
KMX-10-511- RGS	5/2 WAY SOLENOID VALVE EXPLOSION PROOF/INTRINSICALLY SAFE	G1/4 1/4" NPT	1980 NI/min 1.98 Cv
KMX-10-520- RGS	5/2 WAY DOUBLE SOLENOID VALVE EXPLOSION PROOF/INTRINSICALLY SAFE	G1/4 1/4" NPT	1920 NI/min 1.92 Cv
KMX-10-530- RGS	5/3 WAY DOUBLE SOLENOID CENTER POSITION CLOSED EXPLOSION PROOF/INTRINSICALLY SAFE	G1/4 1/4" NPT	1770 NI/min 1.77 Cv